

Global 2025

Hisense Product Catalogue

Commercial Display and Solutions



Hisense | COMMERCIAL
DISPLAY

OUR COMPANY

Company Philosophy



Enterprise Spirit

Respect, dedicated, innovative and efficient.



Mission

To pursue scientific and technological innovation, take the lead in advanced manufacturing with intelligence as the core, and bring happiness to millions of families with high-quality products and services



Vision

To build Hisense for a century and become the most trusted brand in the world.



Values

Integrity, Practicality, Innovation, Customer Focus, and Sustainability

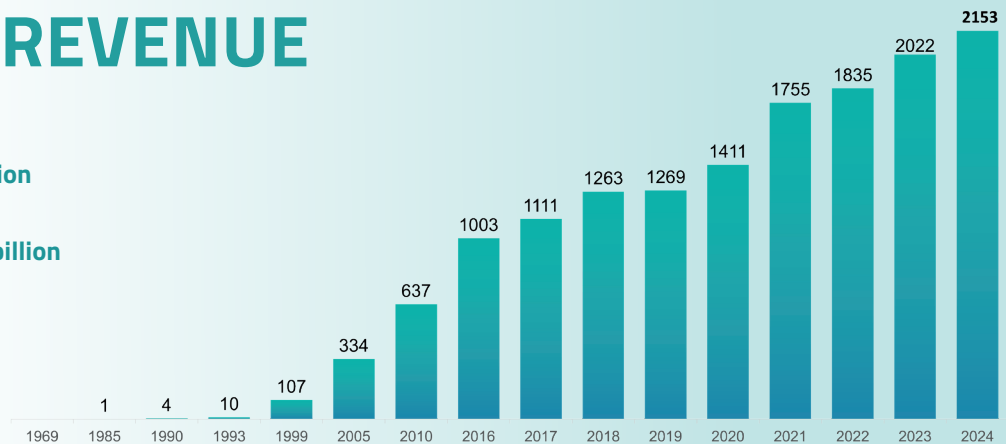
COMPANY REVENUE

Sales Revenue: **RMB 215.3 billion**

Up **6.5%** year on year

Overseas Revenue: **RMB 99.6 billion**

46.3% of the total revenue



SPORTS MARKETING



Strategic Partnerships

Hisense is an official sponsor of UEFA EURO 2024™, following earlier partnerships with UEFA EURO 2016 and 2020, the Australian Open, the NASCAR Xfinity Series, Red Bull Racing F1 Team, Joe Gibbs Racing, and clubs including FC Schalke 04 and Paris Saint-Germain.

SOCIAL RESPONSIBILITY

Committed to Caring

Hisense actively contributes to social public welfare and takes the initiative to assume social responsibility. These values have been deeply rooted in Hisense culture and extended all over the world with the global development of Hisense brand.



DIGITAL SIGNAGE

Hisense Digital Signage is engineered to cater to a variety of business needs, including public spaces, transportation systems, museums, stadiums, retail stores, hotels, restaurants, and corporate buildings. Our latest digital signage displays consistently provide powerful engagement, enhance business operations with real-time updates and data-driven insights, and showcase visually captivating content. You can manage and control devices anytime, anywhere, and simplify cable management by connecting multiple displays to a single video output.

DP30FE

43" | 50" | 55" | 65" | 75" | 85"

4K UHD Digital Signage Display - 16/7 Operation

- Android 9
- 350 nits
- Landscape & Portrait
- 3840 x 2160
- Anti-glare coating
- IP5X
- Energy Star 8.0
- EMC Class B
- Built-in VisionInfo CMS



DM66D | DM66E

32" | 43" | 50" | 55" | 65" | 75" | 86" | 100"

4K* UHD Digital Signage Display - 24/7 Operation

- Android 11
- 500 nits
- Landscape & Portrait
- 3840 x 2160
- Anti-glare coating
- IP5X
- Energy Star 8.0
- Wireless Screen Sharing
- Built-in VisionInfo CMS

* Excludes 32-inch models



GM50D

43" | 50" | 55" | 65" | 75" | 86"

4K UHD Digital Signage Display - 18/7 Operation

- Android 11
- 500 nits
- Landscape & Portrait
- 3840 x 2160
- Anti-glare coating
- IP5X
- Energy Star 8.0
- Wireless Screen Sharing
- Built-in VisionInfo CMS

INTERACTIVE DIGITAL BOARD

Hisense Interactive Display solutions deliver unrivalled performance and market leading value. Combining the power of a digital display, tablet, electronic whiteboard and video conference device, Hisense delivers the ultimate all-in-one display solution. Superior processors and the latest touch technology provide best-in-class user experiences while seamless wireless integration makes collaboration both simple and engaging. The new GoBoard Live Pro and GoBoard features Google certification and Android 13/14 operating system.

WM6FE

GoBoard Live Pro

65" | 75" | 86"

Android 13 4K UHD Interactive Digital Board

- Android 13 (EDLA)
- 8GB + 128GB
- 400 nits
- UHD Display & 4K UI
- Up to 55-point touch
- Integrated 4K Camera & 8 Array Microphone
- Speaker Tracking up to 12m
- Smart Gallery
- Zero-click Pen Annotation
- Eye Protection
- Quick & Easy Screen Sharing
- Built-in VisionInfo CMS
- ENERGY STAR® 8.0



Dolby Atmos



WE3FE

GoBoard

65" | 75" | 86"

Android 14 4K UHD Interactive Digital Board

- Android 14 (EDLA)
- 8GB + 128GB
- 400 nits
- UHD Display & 4K UI
- Eye Protection
- Up to 40 Points Touch (Windows)
- Pluggable Wi-Fi Module
- Quick & Easy Screen Sharing
- Built-in VisionInfo CMS
- ENERGY STAR® 8.0



Native Apps



GOOGLE CHROME



MAPS



MEET



CALENDAR



GMAIL



YOUTUBE



DRIVE



PLAY STORE



GOOGLE CLASSROOM



PHOTOS



GOOGLE DOCS



GOOGLE SHEETS

VIDEO WALL

Hisense's new VW25E Series LCD Video Wall provides users an almost seamless visual experience thanks to our extremely narrow bezel that lets your content vividly stand out. It is powerfully designed for a host of everyday scenarios - from monitoring centers to conference rooms, command centers to shopping malls, and so much more. Hisense LCD Video Wall captivates viewers with vivid visuals, leveraging our superb technologies such as picture enhancement technology, wide viewing angles, and anti-glare features. With VisionInfo built-in, the VW25E Series brings together content management and remote device management at anytime, from anywhere.

VW25E

46" | 55"

Narrow Bezel Video Wall - 24/7 Operation

- Android 11
- 500 nits
- 46" / 55"
- Bezel-to-Bezel: 2.9 mm
- FHD Display
- Non-glare (25% haze)
- RAM/Storage: 2GB / 16GB
- Built-in VisionInfo CMS
- Signal Failover
- Landscape & Portrait
- HDMI daisy-chain (up to 3840 x 2160 @ 60Hz)



HIGH BRIGHTNESS

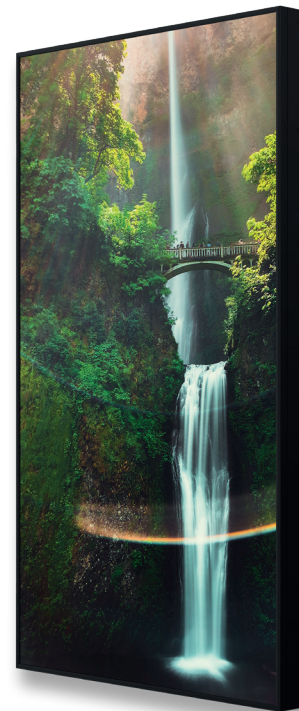
The Hisense window-facing high-brightness display is perfect for retail window displays, menu displays in dining environments and information displays in public transport, maintaining clear visibility of screen content even in direct sunlight and ensuring the delivery of high-visibility and high-impact messages to target audiences. Built-in Android 11 and the VisionInfo CMS platform enable dynamic messaging around the clock, transforming window-facing spaces into high-impact visual stages.

WH80F

55"

Window Facing - 24/7 Operation

- Android 11
- Brightness: 4000 nits
- 4K UHD Display
- Landscape & Portrait
- Bezel-to-Bezel: 9.9 mm
- Ambient Light Sensor
- Built-in Wi-Fi
- Lower Consumption
- 400 x 400 VESA Mount
- Dust & Humidity Protection IP5X
- Built-in VisionInfo CMS



LED SOLUTIONS

Hisense LED display solutions elevate visual communication in any setting. Whether enhancing customer experiences in retail spaces, delivering critical information in transport hubs, or creating stunning visuals for events and public areas, our displays offer unmatched performance and reliability. With flexible installation options and modular designs, our solutions integrate seamlessly and operate effortlessly, empowering you to captivate audiences and communicate effectively.

All-In-One LED

COB AIO

108" | 136"

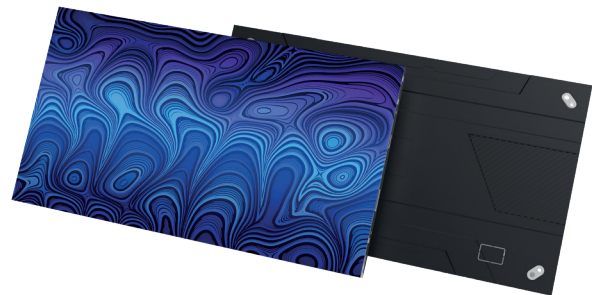
- Pixel Pitch: 1.25mm (108") | 1.56mm (136") | 1.875mm (163")
- 108" & 136" :1000 nits | 163" :500 nits
- Flip-Chip COB: 108" & 136" | Glue On Board SMD: 163"
- Android 9.0
- 1920 x 1080 Resolution
- Ultra-Picture-Quality-Chip
- Stereo Surround Sound 60 W (136" & 163")
- Energy Saving
- Automatic PQ Adjustment
- Sleek Modern Design
- Hisense ASIC Solution
- Quick Installation
- HT007E Wireless Screen Share Dongle (optional)
- Mobile Cart (optional)

GOB AIO

163"



Indoor LED



54DS012FE

54"

Indoor LED Signage

- Brightness (typ./max.): 600 nits / 1000 nits
- Refresh Rate: 3840Hz
- System: Android 9.0
- 3-times Faster Installation
- Front Access
- Built-in VisionInfo
- Energy Efficient
- EMC Class B

XIHFE

P 0.9375 / 1.25 / 1.56 / 1.875

Indoor Flagship

- Flip-Chip COB
- Cabinet Size: 600 x 337.5 x 34.6mm
- Brightness (typ.): 600 nits (100-800 nits Adjustable)
- Quick Installation
- Front Access
- Refresh Rate: 3840Hz
- IP20

LED SOLUTIONS

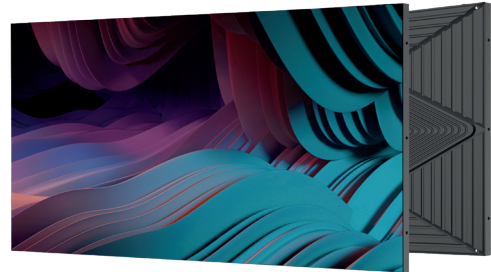
Indoor LED

XIH

P 0.9375 / 1.25 / 1.56

Indoor Premium

- Flip-Chip COB
- Cabinet Size: 600 x 337.5mm x 39.3mm
- Brightness (typ.): 600 nits
- Quick Installation
- Front Access
- Refresh Rate: 3840Hz
- IP20

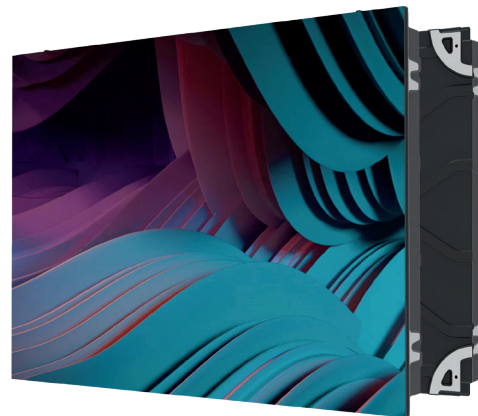


XIM

P 1.86 / 2 / 2.5 / 3.076 / 4

Indoor Versatile

- SMD
- Cabinet Size: 640 x 480 x 48mm / 640 x 640 x 49mm / 320 x 480 x 48mm
- Brightness (typ.): 600 nits
- Front Access
- Fast Lock
- Lightweight: 6.5kg / 8.2kg / 3.8kg / Cabinet
- IP30 Front
- Refresh Rate: 3840Hz



Outdoor LED



XOM

P 5 / 6.67 / 8 / 10 / 10.66 / 16

Outdoor Stadium

- SMD
- Cabinet Size: 960 x 960 x 106mm / 1440 x 960 x 106mm / 960 x 1280 x 106mm
- Brightness (typ.): 6500 nits
- Front & Rear Access
- Bit Depth: 14 bit (14~16 bit Customizable)
- Front IP65 / Rear IP65
- Refresh Rate: 1920 Hz (3840 Hz Customizable)



SP

P 6.67 / 10

Outdoor Stadium Perimeter

- SMD
- Cabinet Size: 1280 x 960 x 150mm
- Brightness (typ.): 6000 nits
- Front & Rear Access
- Flexible Laminated Protection
- Front IP65 / Rear IP65
- Refresh Rate: 3840 Hz

LED SOLUTIONS

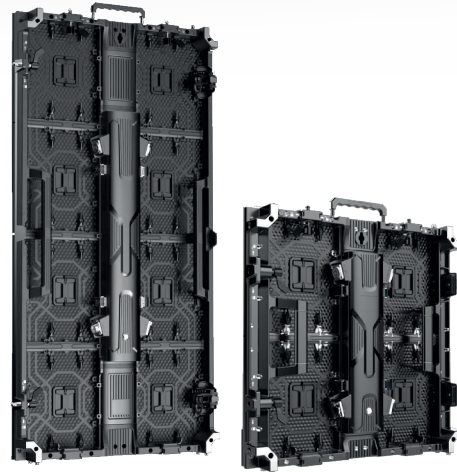
Rental LED

RNM

P 1.953 / 2.604 / 2.976 / 3.91

Indoor Rental

- SMD
- Cabinet Size: 500 x 500 / 1000 x 75mm
- Brightness (typ.): 1000 nits
- Module Front & Rear / Power Rear Access
- Quick Installation
- Fast Lock
- Signal Redundancy
- Refresh Rate: 7680 Hz



ROM

P 2.604 / 2.976 / 3.91

Outdoor Rental

- SMD
- Cabinet Size: 500 x 500 x 75 mm / 500 x 1000 x 75 mm
- Brightness (typ.): 4500 nits
- Module Front & Rear / Power Rear Access
- Fast Lock
- Refresh Rate: 7680Hz
- IP65 / IP65

RO

P 2.9 / 3.9 / 4.8

Outdoor Rental

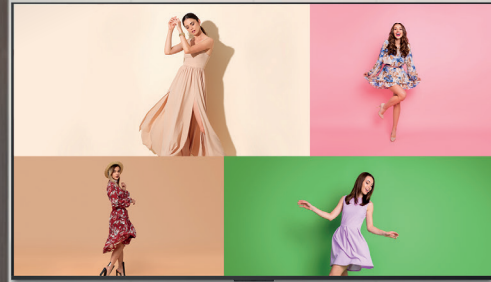
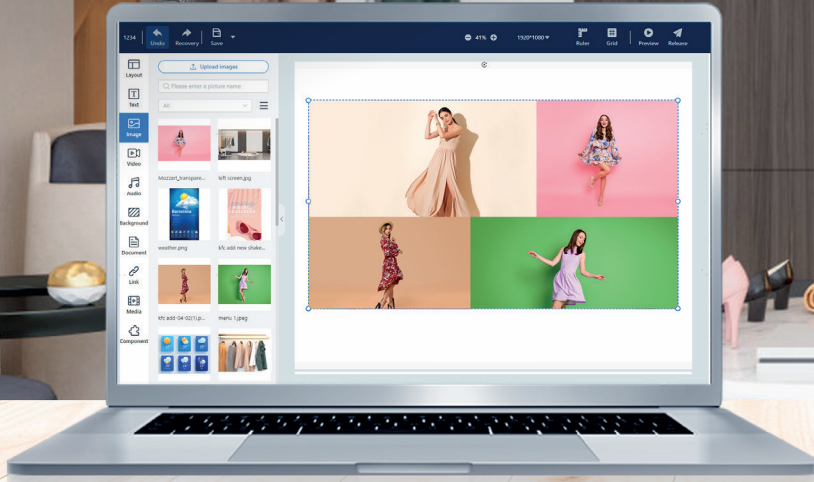
- SMD
- Cabinet Size: 500 x 500 x 65 mm / 500 x 1000 x 65 mm
- Brightness (typ.): 4500 nits
- Quick Installation
- Front & Rear Access
- Front IP65 / Rear IP65
- Refresh Rate: 3840Hz

RIL

P 1.953 / 2.604 / 2.976 / 3.91

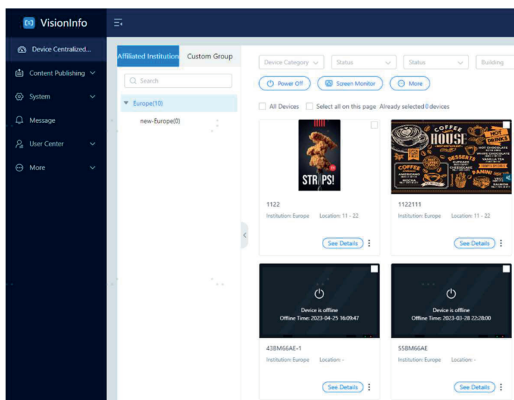
Indoor Rental

- SMD
- Cabinet Size: 500 x 500 x 85 mm / 500 x 1000 x 85 mm
- Brightness (typ.): 600 nits
- Rear Access
- Quick Installation
- Fast Lock
- Refresh Rate: 7680Hz



CONTENT MANAGEMENT SYSTEM

VisionInfo by Hisense is a cloud-based platform offering flexible, cost-efficient, and infinitely scalable solutions. Combining a comprehensive CMS with advanced remote display management capabilities, it empowers users to freely create and distribute content while maintaining visual consistency across all networked screens. This powerful yet intuitive tool enables seamless content management and display control from any location at any time.



Key Features

- Drag-and-Drop Layout
- AI Image Generation
- Live Stream Support
- Offline Content Playback
- P2P Download
- Device / Playback Dashboards
- Rich Pre-set Templates
- Real-time Display Control
- Error Notifications
- Remote Desktop Real-time Monitoring
- Remote Software / OTA
- Display usage statistics
- Website Integration Support
- OneDrive & Google Drive Media Import
- Effortless Mobile Management
- Precise Map Ad Targeting
- Synchronized Playback
- Splicing Playback

ACCESSORIES

Wireless USB-C Dongle - HT007E

Connect the USB-C dongle to your laptop and share to the digital board with one click—fast, stable streaming; iOS, Android, Windows, and macOS supported simultaneously.

Compatible devices: AIO LED (HAIO108DE, HAIO136DE, HAIO163DE) and Interactive Whiteboard (MR6DE, WM6FE).



Media Player - A10

The A10 is a high-performance media player developed by Hisense. Powered by Android 11 with built-in VisionInfo, it delivers seamless 4K video playback and supports resource-intensive applications.

Key Features

- Android 11
- Built-in: VisionInfo CMS
- CPU: ARM Cortex-A35 Quad-core up to 2.0GHz
- GPU: ARM Mali-G31 MP2 GPU
- DRAM: 2GB DDR4
- Flash: 8GB eMMC
- 4K HDR
- Wi-Fi: 2x2 MIMO Wi-Fi 2.4GHz / 5GHz 802.11a/b/g/n/ac
- Bluetooth: 5.0 with BLE
- 1 x HDMI 2.1, S/PDIF, 1 x RJ45, 1 x microSD, 1 x AV



Height-adjustable Mobile Cart

WH3309-LK

Suits 65", 75" and 86" screen

Note: Designed for Hisense Interactive Digital Board, Mobile Cart does not come with TV brackets



Fixed-height Mobile Cart

LG400301A

LGT60401A

LGR00401A



LG400301A (108" AIO)

LGT60401A (136" AIO)

LGR00401A (163" AIO)

ESG PRACTICES

Adhering to long-termism in practicing ESG, integrating low-carbon principles throughout corporate governance and operations, and making sustainability a key pillar in building a "century-old Hisense"



No. 1

The Worlds first VRF
"Lighthouse Factory"



No. 1

Building first and
only "Zero-carbon
Factory" in China's
TV industry



2

Intelligent Factory
selected by MIIT as one
of the first Excellent
Intelligent Factories



4

4 National-level
Manufacturing
single champion
enterprises



17

Establishing 17
national-level Green
Factories



100+

Leading participation
in over 100 green and
low-carbon technology
standards development
and revision

Achieve Operational Carbon
Peaking by no later than
2026

Achieve Operational Carbon
Neutrality by no later than
2050

Hisense | COMMERCIAL
DISPLAY