

### Overview

The Extron TLP Pro 1225MG and TLP Pro 1525MG are wall-mounted touchpanels with capacitive, edge-to-edge glass touchscreens. The TLP Pro 1225MG has a 12.1 inch screen with a 1280x800 resolution. The TLP Pro 1525MG has a 15.6 inch screen with a 1366x768 resolution. Both touchpanels are ideal for any AV applications requiring large touchpanels with flexible mounting options and fully customizable interfaces. This guide provides instructions for experienced installers to mount and install these touchpanels. For more complete details, see the *TLP Pro 1225 and TLP Pro 1525 Series User Guide* at [www.extron.com](http://www.extron.com).

### Setup Checklist

#### Get Ready

- ☐ Download and install the latest version of the following software:
  - ☐ **GUI Designer** — for designing layouts for Extron TouchLink® Pro touchpanels and third party touch interfaces
  - ☐ **Global Configurator® Professional or Global Configurator Plus** — for setting up and configuring the control processor and touchpanel
  - ☐ **Toolbelt** — provides device discovery, device information, firmware updates, configuration of network settings, system utilities, and user management for TouchLink Pro devices
  - ☐ **Global Scripter®** — provides an integrated development environment for Extron control systems programming.

**NOTE:** All four software programs are available from [www.extron.com](http://www.extron.com).

- ☐ Obtain the following network information from your network administrator:
  - ☐ **DHCP status** (on or off). If DHCP is off, you also require:
    - ☐ **IP address**
    - ☐ **Subnet mask**
    - ☐ **Gateway**
  - ☐ **Username** — This can be either admin or user.
  - ☐ **Passwords** — The factory configured passwords for all accounts on this device have been set to the device serial number. Passwords can be changed during configuration. Passwords are case sensitive.

**NOTE:** If the device is reset to default settings, the passwords are reset to the default password, which is extron (for either admin or user).

- ☐ Make a note of the touchpanel MAC address.

#### Mount and Cable All Devices

##### ATTENTION:

- Do not power on the touchpanels until you have read the Attention in the “Power Supply” section of the *TLP Pro 1225 and TLP Pro 1525 Series User Guide*.
- Ne branchez pas les écrans tactiles avant d’avoir lu la mise en garde dans la section « sources d’alimentation » du *TLP Pro 1225 and TLP Pro 1525 Series User Guide*.

- ☐ Mount the units. There are several mounting options for TouchLink Pro touchpanels (see [Mounting](#) on page 2).
- ☐ Connect the touchpanel to a Power over Ethernet (PoE) injector (not provided). Extron recommends the PI 140 power injector, which must be purchased separately (see [Rear Panel Features](#) on page 4).
- ☐ Connect the power injector to the LAN and power it on.
- ☐ An Extron IP Link® Pro control processor must be connected to the same Ethernet subnetwork as the touchpanel.

#### Set up the Touchpanels for Network Communication

- ☐ Connect the PC that you will use for setup, the control processor, and touchpanel **to the same Ethernet subnetwork**.
- ☐ Use the [Setup Menu](#) (see page 5) or Toolbelt (see *Toolbelt Help File*) to set the DHCP status and, if necessary, the IP address, subnet mask, gateway, and related settings for the touchpanel.

#### Configure the Touchpanels

- ☐ Create a graphical user interface with GUI Designer (see *GUI Designer Help File* for step-by-step instructions).
- ☐ Associate functions with the graphical user interface features by configuring (see the *Global Configurator Help File*) or programming (see the *Global Scripter Help File*) the system. Global Scripter provides an Extron-exclusive Python library (ControlScript®) and Global Scripter modules to get you started.

# TLP Pro 1225MG and TLP Pro 1525MG • Setup Guide

## Mounting

### ATTENTION:

- Do not install the TLP Pro 1225MG, or TLP Pro 1525MG in a fire resistant rated wall or partition assembly.
- Ne pas installer le TLP Pro 1225MG ou le TLP Pro 1525MG dans un mur résistant au feu ou une cloison.
- All structural steps and electrical installation must be performed by qualified personnel in accordance with local and national building codes and electrical codes.
- Toute étape structurelle et installation électrique, doit être effectuée par un personnel qualifié, conformément aux codes du bâtiment, aux codes incendie et sécurité, et aux codes électriques, locaux et nationaux.

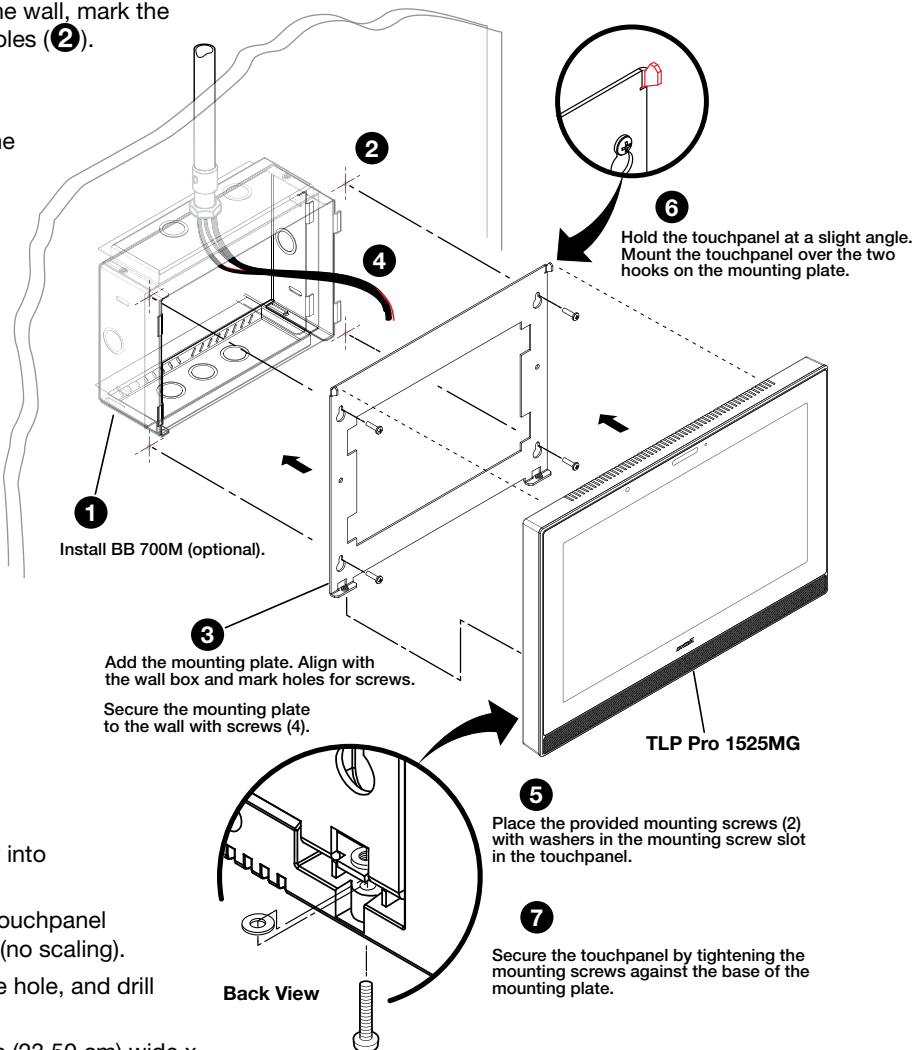
## Wall Mounting

The touchpanels can be wall mounted, using the provided hardware. Where local codes require a rear metal enclosure, either model can be mounted using the Extron BB 700M (not provided). Figure 1 shows the TLP Pro 1525MG. Mount the TLP Pro 1225MG in the same way.

### With a wall box

Some local building codes require the touchpanel to be mounted in a wall box such as the Extron BB 700M. This installation procedure is described below.

1. Cut a hole in the drywall, 9.55 inches (24.26 cm) wide x 6.55 inches (16.64 cm) high, and install the BB 700M ( see figure 1, ❶), as described in the *BB 700M Installation Guide* (see [www.extron.com](http://www.extron.com)).
2. Place the metal mounting plate against the wall, mark the four mounting holes, and drill four pilot holes (❷).
3. Secure the mounting plate with four #10 screws (❸).
4. Run and connect cables to the back of the touchpanel (❹, and see [Rear Panel Features](#) on page 4).
5. Insert the two provided Phillips pan head #6-32 x ¾ inch length screws with washers in the mounting screw slot (❺, see Figure 1, Back View inset). Leave a gap for the flange at the bottom of the mounting plate to fit into.
6. Hold the touchpanel at a slight angle and lower the notches at the top of the back panel (❻) over the hooks of the mounting plate.
7. Swing the bottom of the touchpanel inwards so that it lies flat against the mounting plate with the flange at the bottom of the mounting plate sitting in a groove in the bottom of the touchpanel.
8. Secure the touchpanel to the mounting plate with the mounting screws (❼).



### Without a wall box

If the wall box is not required by local building codes, you can mount the touchpanel directly into drywall.

1. Download the cut-out template for your touchpanel from [www.extron.com](http://www.extron.com). Print it at 100% (no scaling).
2. Use the template to mark the wall, cut the hole, and drill the four pilot holes.  
The size of the cut-out hole is 9.25 inches (23.50 cm) wide x 6.25 inches (15.88 cm) high.
3. Secure the mounting plate and complete the installation, as described in [steps 3 through 8](#) above.

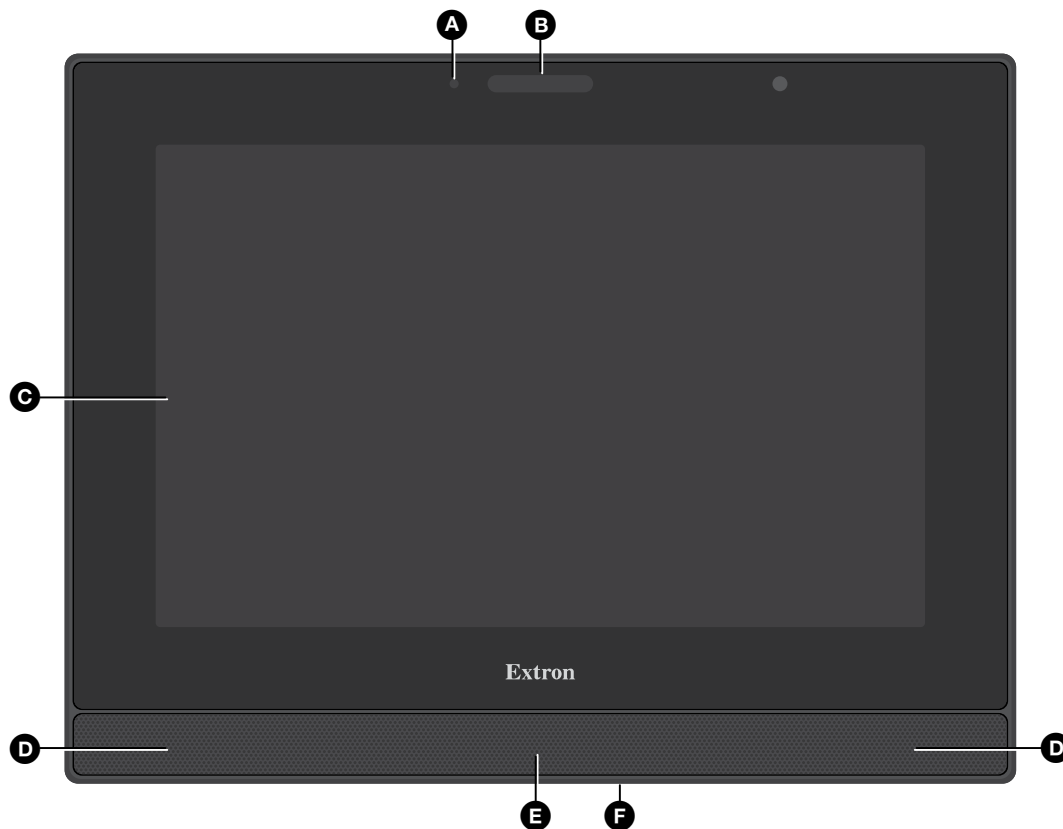
Figure 1. TLP Pro 1525MG Mounting

## Rack Mounting

These touchpanels can be mounted in any standard 19-inch equipment rack, using the optional rack mounting kit. The TLP Pro 1225MG can be mounted with the RM2 mounting kit. The TLP Pro 1525MG can be mounted with the RM3 mounting kit. Read the “Underwriters Labs Guidelines for Rack Mounting” in the *TLP Pro 1225 and TLP Pro 1525 Series User Guide* and follow the instructions provided with the appropriate kit.

## Front Panel Features

Figure 2 shows the TLP Pro 1225MG front panel diagram. The TLP Pro 1525MG features are very similar.

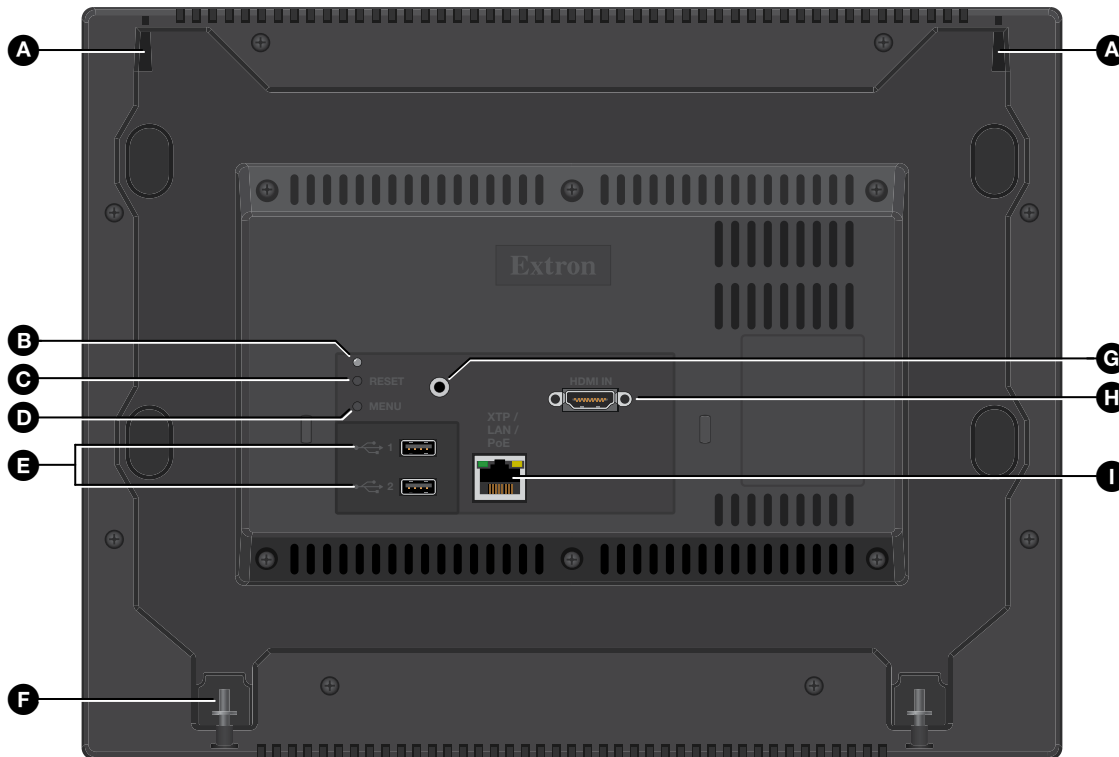


**Figure 2. TLP Pro 1225MG Front Panel**

- A Ambient light sensor** — Monitors ambient light level and adjusts screen brightness.
  - B Status light** — Can be programmed to provide system feedback. The LED light bar is located above the screen.
  - C Capacitive touch screen** — Provides simple control of AV systems:
    - The TLP Pro 1225MG has a 12.1 inch screen with a 1280x800 resolution.
    - The TLP Pro 1525MG has a 15.6 inch screen with a 1366x768 resolution.
  - D Speakers** — Provide stereo audio for video preview and audible feedback from button presses. They are located below the screen, one on each side of the panel.
  - E Motion sensor** — Detects motion between three to five feet from the touchpanel, and at least 15° from the center axis.
    - If the Sleep Timer has been set, and no motion has been detected for a user-defined period of time, the touchpanel enters sleep mode.
    - If Wake on Motion has been set, and motion is detected by the sensor while the screen is in sleep mode, the screen display is restored and active.
- For more information about setting the Sleep Timer or Wake on Motion, see the “Setup Menu” section of the *TLP Pro 1225 and TLP Pro 1525 Series User Guide*.
- F Menu button** — Activates the setup menu (see [Setup Menu](#)). It is accessed from under the touchpanel. It performs the same function as the rear panel **Menu** button but is easier to reach when the touchpanel is installed.

# TLP Pro 1225MG and TLP Pro 1525MG • Setup Guide

## Rear Panel Features



**Figure 3. TLP Pro 1225MG Rear Panel**

- A Mounting plate notch (2)** — Fit over the hooks at the top of the mounting plate (see [Wall Mounting](#) on page 2).
- B Reset LED** — Provides feedback about the reset status when the user presses the reset button.
- C Reset button** — Pressing the **Reset** button allows the unit to be reset in any of three different modes (see [Reset Modes: a Brief Summary](#) on page 5). For more information, see the *TLP Pro 1225 and TLP Pro 1525 Series User Guide*.
- D Menu button** — Activates the setup menu (see [Setup Menu](#)).
- E USB connectors (2)** — For peripheral controls.
- F Mounting screw slot (2)** — Insert the provided screws here. Secure the touchpanel to the mounting plate.
- G Audio output** — For use with headphones or assistive listening devices.
- H HDMI input** — For alternative video input.
- I XTP/LAN/PoE input**
  - **XTP input** — Connect the touchpanel to the XTP source using a twisted pair cable, terminated with an RJ-45 connector. For complete information about which cables to use, see the user guide for your XTP product.
  - **LAN input** — Connect the touchpanel to the LAN using a twisted pair cable, terminated with an RJ-45 connector.
  - **PoE input** — the connector can be used with a PoE power injector (see [Connecting Power](#) on the next page).

**NOTE:** Some XTP models are able to remotely power these touchpanels but not all have that capability. Go to the [Extron website](#) and check the product page for your XTP model to ensure it can power your touchpanel.

An Extron IP Link Pro control processor must also be connected to the same network as the TouchLink Pro touchpanel.

## Connecting Power

### ATTENTION:

- Do not power on the touchpanels until you have read the **ATTENTION** in the “Rear Panel Features” section of the *TLP Pro 1225 and TLP Pro 1525 Series User Guide*.
- Ne branchez pas les écrans tactiles avant d’avoir lu la mise en garde dans la section « Rear Panel Features » du *TLP Pro 1225 and TLP Pro 1525 Series User Guide*.

The power injector must be purchased separately. Figure 4 shows the Extron PI 140. Your power injector may look different.

1. Connect a straight-through Ethernet cable from the power injector to a switch or router (see figure 4, ❶). This cable carries network information from the switch or router to the power supply input.
2. Connect a second straight-through cable (❷) from the power injector to the TLP Pro touchpanel XTP/LAN/PoE connector (see figure 3, ❶, on page 4). This cable carries the network information and 48 VDC from the power injector to the touchpanel.
3. Connect the IEC power cord to a convenient 100 VAC to 240 VAC, 50-60 Hz power source (❸).

Alternatively, use an Ethernet cable to connect the XTP/LAN/PoE port of the interface to a PoE+ switch or connect the touchpanel directly to an XTP model that is capable of remotely powering a touchpanel (see the [note](#) on page 4).

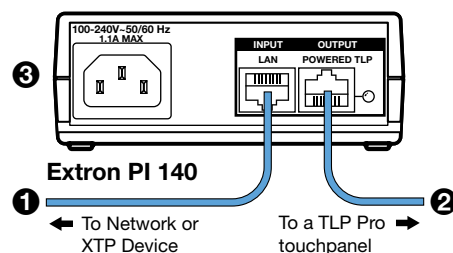


Figure 4. Connecting the Power Injector

## Reset Modes: a Brief Summary

The TLP Pro 1225MG and TLP Pro 1525 MG offer the following reset modes. For full information about the modes, see the *TLP Pro 1225 and TLP Pro 1525 Series User Guide*.

- **Use factory firmware:** Use this mode to replace firmware in the event of firmware failure. Press and hold the **Reset** button (see figure 3, ❸) while applying power to the unit.
- **Reset All IP Settings:** Use this mode to reset all network settings without affecting user-loaded files. Press and hold the **Reset** button for 6 seconds. After the Reset LED (❷) flashes twice, release and momentarily press the **Reset** button.
- **Reset to Factory Defaults:** Use this mode to return the interface to factory default settings. Press and hold the **Reset** button for 9 seconds. After the Reset LED flashes three times, release and momentarily press the **Reset** button.

### NOTES:

- The factory configured passwords for all accounts on this device have been set to the device serial number. Passwords can be changed during configuration. Passwords are case sensitive.
- If the device is reset to default settings, the passwords are reset to the default password, which is extron (for either admin or user).

- **Enable or Disable the DHCP Client** Use this mode to toggle between DHCP enabled and DHCP disabled. Press the **Reset** button five times, consecutively. After the fifth press, do not press the button again within 3 seconds. If DHCP was enabled, it is now disabled and the Reset LED blinks three times. If DHCP was disabled, it is now enabled and the Reset LED blinks six times.

## Setup Menu

Press the **Menu** button (figure 2, ❶ on page 3 or figure 3, ❶ on page 4) to open the setup menu. Select any of the six available screens (**Status**, **Network**, **Display**, **Audio**, **Input** and **Advanced**) by pressing the appropriate button in the navigation bar at the top of the screen (for more information, see the *TLP Pro 1225 and TLP Pro 1525 Series User Guide*).

Figure 5 shows the setup menu for the TLP Pro 1225MG. The setup menu for the TLP Pro 1525MG is almost identical.

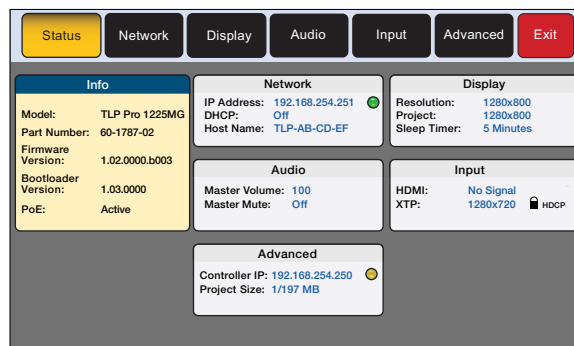


Figure 5. Setup Menu: Status page for TLP Pro 1225MG

For information on safety guidelines, regulatory compliances, EMI/EMF compatibility, accessibility, and related topics, see the [Extron Safety and Regulatory Compliance Guide](#) on the Extron website.  
For information about replacing and disposing of batteries, see the *TLP Pro 1225 and TLP Pro 1525 Series User Guide* at [www.extron.com](http://www.extron.com).