



# MXA925 CEILING ARRAY MICROPHONE

## OVERVIEW

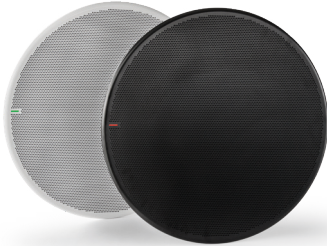
The MXA925 sets a new standard for conferencing audio in modern meeting spaces. Built on Shure's proven ceiling array platform, it delivers clear, natural speech capture with AI-enabled IntelliMix® Digital Signal Processing (DSP) onboard. Dual RJ45 networking, enterprise-grade security, and remote management with ShureCloud make the MXA925 an IT-friendly solution for organizations that need reliable, scalable audio capture.

## FEATURES

- Automatic Coverage™ provides default 30 ft × 30 ft (9 m × 9 m) pickup out of the box
- Up to eight configurable coverage areas for precise voice capture in complex room layouts
- Supports AV conferencing, camera tracking, and voice lift for versatile applications
- AI-enabled IntelliMix® DSP including AI Acoustic Echo Cancellation (AEC), AI Denoiser, and AI Deverb algorithms.
- Virtual Acoustic Boundary ensures that voices or noises outside of defined automatic coverage areas will not be heard.
- Optimize Tracking feature streamlines setup and greatly improves talker location accuracy when using multiple MXA925 microphones in larger spaces
- Command strings and Device API support integration with third-party cameras and room control systems
- Certified for Microsoft Teams Rooms and Zoom Rooms for seamless platform integration
- Enterprise-grade security with 802.1X authentication, audio encryption, and secure boot
- Dual RJ45 ports enable flexible, redundant, and secure deployments
- Remote monitoring and firmware management via ShureCloud



**MXA925-60CM**  
Ceiling Array Microphones  
Front



**MXA925-R**  
Ceiling Array Microphones  
Front

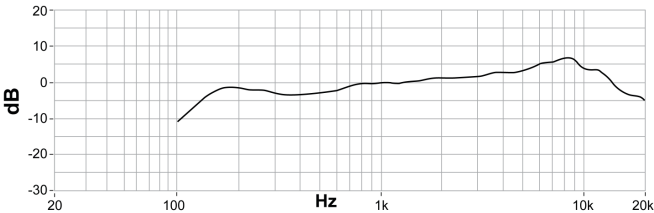


**Dual RJ45 Network Ports**

## SPECIFICATIONS All information and specifications are subject to change.

<b>Connector Type</b>	Dual RJ45 connectors
<b>Power Requirements</b>	Power over Ethernet (PoE), Class 0
<b>Weight</b>	MXA925-S: 11.8 lbs (5.4 kg) MXA925-R: 12.7 lbs (5.8 kg)
<b>Product Dimensions</b>	MXA925-S: 23.77in. (603.8mm) X 23.77in. (603.8mm) x 2.15 in. (54.69 mm) MXA925-S-60CM: 23.38 in. (593.8 mm) x 23.38 in. (593.8 mm) x 2.15 in. (54.69 mm) MXA925-R: 25 in. (635.4 mm) x 2.4 in. (61.3 mm)
<b>Control Software</b>	Web Application or Shure Designer
<b>Cable Requirements</b>	Cat5e or higher (shielded cable recommended)
<b>Operating Temperature Range</b>	-6.7°C (20°F) to 40°C (104°F)
<b>Plenum Rating</b>	MXA925-S UL2043 (Suitable for Air Handling Spaces) MXA925-R Not rated
<b>Dust Protection</b>	IEC 60529 IP5X Dust Protected
<b>Frequency Response</b>	125 Hz to 20 kHz
<b>Polar Pattern</b>	Array
<b>Microphone Elements</b>	113 MEMS
<b>Coverage Type</b>	Automatic Coverage / Steerable Coverage
<b>Coverage Size</b>	30 x 30 feet (9.1 x 9.1 meters)
<b>Latency</b>	Direct outputs (Automatic coverage off) 13 ms Automix output (Includes IntelliMix processing) 47 ms
<b>Dynamic Range</b>	77.5 dB

## FREQUENCY RESPONSE



## SKUs

<b>MXA925W-S</b>	White square microphone
<b>MXA925W-S-60CM</b>	White square microphone (60 cm)
<b>MXA925B-S</b>	Black square microphone
<b>MXA925B-S-60CM</b>	Black square microphone (60 cm)
<b>MXA925W-R</b>	White round microphone
<b>MXA925B-R</b>	Black round microphone

## AVAILABLE PARTS AND ACCESORIES

<b>A900-GM</b>	Gripple Mount Kit
<b>A900-PM</b>	Pole Mount Kit
<b>A910-JB</b>	Junction Box Accessory
<b>A900-CM</b>	On-Ceiling Mount
<b>A910-HCM</b>	Hard Ceiling Mount