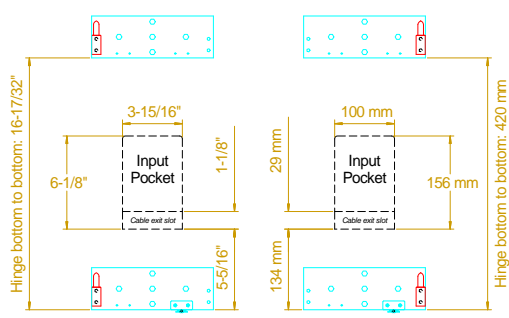
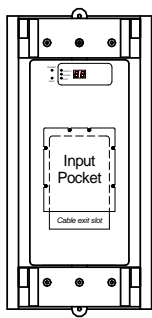
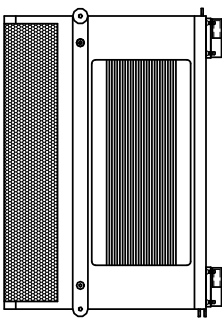
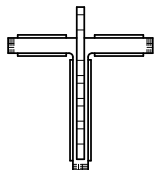
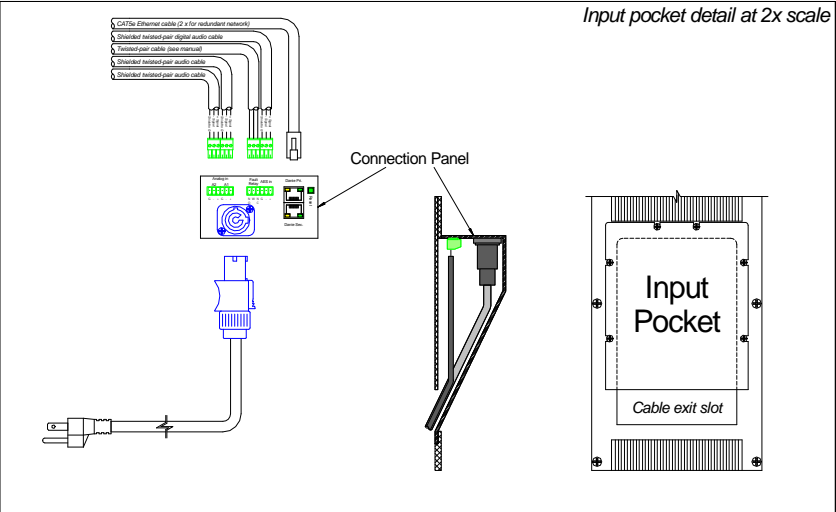


RHANG Flybar



Install/WR version



WARNING! Hanging loudspeakers is a serious undertaking that should be done only by qualified and experienced personnel. Check with an architect or structural engineer to verify any building attachment points. Renkus-Heinz is not responsible for any non-Renkus-Heinz products or for any misuse of Renkus-Heinz products.

THE MATERIAL CONTAINED HEREIN IS PROPRIETARY TO RENKUS-HEINZ AND SHALL NOT BE REPRODUCED, DISCLOSED OR USED FOR ANY OTHER PURPOSE WITHOUT THE WRITTEN APPROVAL OF RENKUS-HEINZ.

PART NUMBER LIST			
REV	DESCRIPTION	DATE	BY
UNLESS OTHERWISE SPECIFIED DIMENSIONS ARE IN INCHES TOLERANCES ARE: DECIMALS .XX±.01 ANGLES ±0° 30' .XXX±.005			
DRAWN	INTL	DATE	TITLE: ICLX-RN or -RD ASSEMBLY
CHECK	JM	12-2018	
DESIGN			
ENG			
APPROV			
REF DWG			
NEXT ASSY.	USED ON	DO NOT SCALE DRAWING	SIZE CODE IDENT DWG NO. REV
APPLICATION	DEBURR AND REMOVE SHARP EDGES	SCALE WEIGHT	SHEET 1 OF 1

