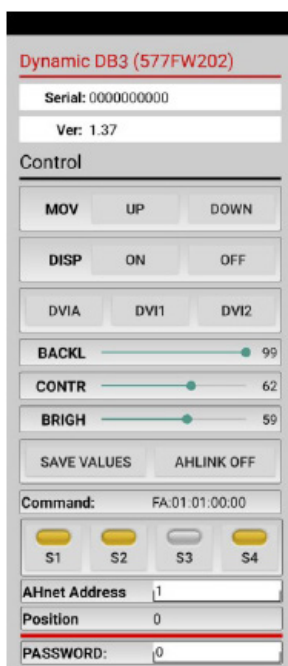
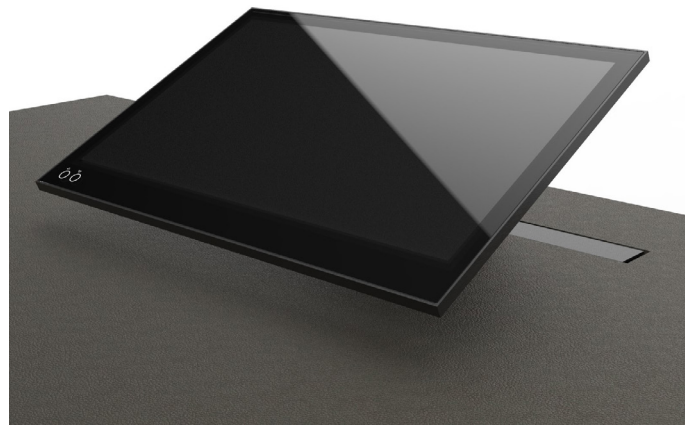
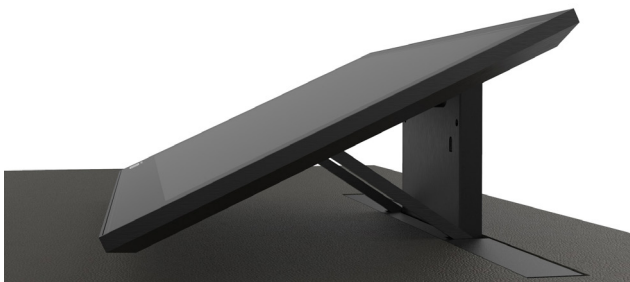
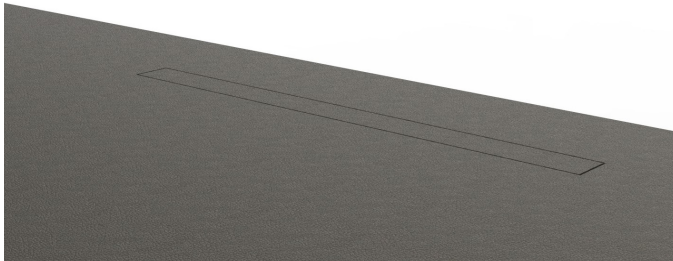


DB3

HDCP compliant aluminum motorized monitor



Highlights

- Vertical motorized monitor with inclination of 20-90°
- Adjustable tilt angle with memory
- 20 mm. of thickness
- Automated hatch prepared for veenering
- Milled and anodized black aluminum housing
- Front anti-reflective 2 sides coated 2 mm. black edged glass
- Energy saving design, low consumption video controller
- 2/DVI inputs, HDCP compliant
- RS422/RS485 I/O
- ISD: Interactive Setup Display for adjustments and service
- AHlink: Wireless connectivity for setup, adjustments, and control
- AH-AMMC: Auto mechanical Movement Calibration

AHlink : the App for setup, control and diagnose



ARTHUR HOLM

Albiral Display Solutions SL · Fàtima, 25 Sant Hipòlit de Voltregà 08512 Barcelona, Spain · +34 938 502 376 · marketing@arthurholm.com · www.arthurholm.com
Arthur Holm is a registered brand of Albiral Display Solutions SL. Specifications subject to change without previous notice.

Technology serving Design

General

Professional 21.5" motorized monitor that creates a minimum impact of the table's design. The cover plate has been specially designed for veneering, thus providing a streamlined finish of the furniture. The user can adjust the screen's position on the table to limit its height and respond to ergonomic comfort needs and visibility towards other people seated around the meeting table. The screen slides smoothly towards the user, who can stop the movement, and fix the position at the desired angle, from 90 to 20°. A memory function will allow to fix and recall the desired position. The movement is harmonious and silent. The design is elegant and timeless. The materials used for the creation of this innovative, retractable monitor are sustainable (aluminum and glass) and the 21.5" LCD industrial display panel provides a long life. The electronics, designed entirely in-house, are energy efficient, and the AHlink app ensures a comfortable and intuitive adjustment during integration, and as well as throughout all the life of the monitor.

The retractable monitor is equipped with 2/DVI HDCP compliant inputs and an Interactive Setup Display allowing its setup, control and diagnose.

The monitor provides RS422/485 (I/O) allowing the remote control of the input selection, movements, speeds, safety settings, brightness, contrast and backlight adjustments. It can also be adjusted and controlled via a wireless application: AHlink. The AHlink Android and iOS App allows the access to the setup and control menu and to get the serial number and firmware version without removing the monitor from the table.

The Auto Mechanical Movement Calibration will automatically adjust the speed and the safety protection parameters.

The use of the ERT-30 and the ERT-60 enables an automatic individual address configuration of all the monitors in a table.

Technical Specifications

Display

Size	FULL HD 21.5" TFT Active Matrix, widescreen format. LED backlight
Resolution	1920 (h) x 1080 (v)
Brightness	350 cd/m2
Contrast ratio	1000:1
Pixel	0.24975 (h) x 0.24975 (v) mm
Viewing angle	89°/89°(l/r) 89°/89°(u/d)
Viewing area	476.064 (h) x 267.786 (v) mm
LED backlight lifespan	50,000 hrs
Response time	Tr 12ms, Tf 10ms
Temperature (operating/storage)	Operating 0°C ~ +40°C Storage -20°C ~ +60°C

Materials

Monitor housing	Solid mechanized aluminum housing with black anodized finish. Front black serigraphed glass
-----------------	---

Connectivity

Input signal	DVI-I (1 input) – HDCP compliant DVI-D (1 input) – HDCP compliant
RJ45 CAT6 (I/O)	Addressable RS-422/RS-485 control by AHnet protocol
GPI (SubD9)	Up/Down control (opto isolated)
USB	For service (firmware upgrades)

Control

RJ45, RS-422/RS-485 (I/O), AHnet protocol
AHlink
Addressing
Termination switch
GPI
IR Remote control (monitor adjustments)

Movement's Control

User interface on monitor	(Up/Down) Capacitive touch sensor
Remote	RS-422/RS-485 (I/O), GPI

AHlink

Electrical

External power supply	100-240 Vac, 47/63Hz, 12Vdc
Power consumption	50W

Accessories

ERT-30 / ERT-60	Ethernet Interface Unit
-----------------	-------------------------

Mechanical

Monitor Dimensions:	
Screen	518 x 333 x 20 mm [20.39" x 13.11" x 0.79"]
Top frame	528 x 20 mm [20.78" x 0.79"]
Housing below the table	594 x 637 x 115 mm [23.38" x 25.07" x 4.52"]
Weight	18 Kg / 39.6 Lbs
Shipping Dimensions:	
Weight	TBD
Shipping Box	TBD

ARTHUR HOLM

Albiral Display Solutions SL · Fàtima, 25 Sant Hipòlit de Voltregà 08512 Barcelona, Spain · +34 938 502 376 · marketing@arthurholm.com · www.arthurholm.com
Arthur Holm is a registered brand of Albiral Display Solutions SL. Specifications subject to change without previous notice.

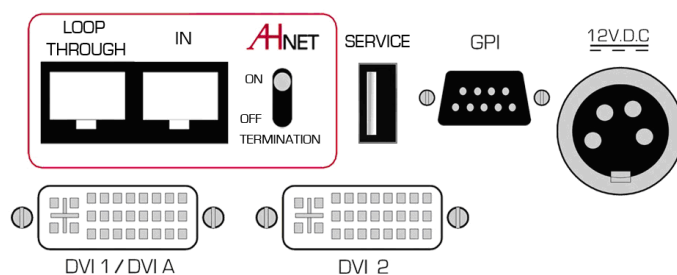
Technology serving Design

Options and accessories

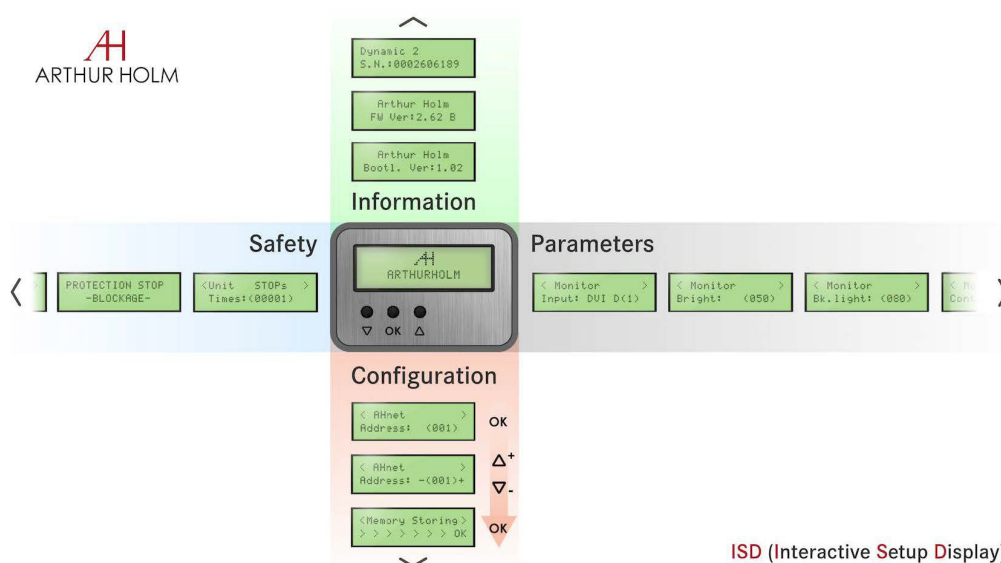
- 2/ HDMI inputs
- DynamicLoop
- DynamicShare
- Projected capacitive multi-touch screen

Warranty

- 5 years for the mechanical parts



Interactive Setup Display (ISD)



ISD (Interactive Setup Display)

Consultants, architects and engineers specifications

Vertically motorized 21.5" Full HD professional monitor with an inclination from 90 to 20 degrees on the desk. The monitor housing shall be made of milled anodized aluminum with a 20 mm. thickness and the screen shall be protected with an anti-reflecting 2 side coating black edged 2 mm. glass. The cover plate shall slide down inside the mechanism and shall be designed for veneering. A capacitive button shall be placed on the cover plate to activate the monitor's movement. A memory button shall allow the memorization of the preferred user's monitor position and its recall.

The monitor shall have a brightness of 350 cd/m2, a contrast ratio of 1000:1 and a backlight lifespan of 50,000 hours.

The monitor shall provide a USB port for firmware upgrades. The monitor shall be controlled by a wireless Android and iOS App providing information about the monitor's serial number, and providing access to the control and to the setup menu.